



Welcome!

Child Development and Education

Our top mission while working with priority populations is to provide the most thorough and supportive resources in order to help our families work towards reaching their child's optimal growth and development, by offering them the necessary tools.

By compiling a list of programs, we guide each family through the process of accessing the resources which promote family literacy, social services, case management, etc.

We are able to refer families to local licensed family therapists, mental health professionals and many more services listed on this pamphlet.

Child Development and Education, Inc.

New Bedford Staff Directory

Office Director:

Molly Barnes - mbarnes@cdedu.co

Contract Managers:

Gretchen Cabral - gcabral@cdedu.co

Kenya Williams - kwilliams@cdedu.co

Administrative Director:

Maritza Ruiz - mruiiz@cdedu.co

Payroll Administrator:

Charline Monteiro - cmonteiro@cdedu.co

Family Child Care Coordinator:

Dawn McNeill - dmcneill@cdedu.co

Child Development and Education, Inc.

38 Elm Street

New Bedford, MA 02740

(Office): **508-993-0745** (Fax): **508-993-0748**

(Cell): **781-870-0236**

www.cdedu.us / info@cdedu.us

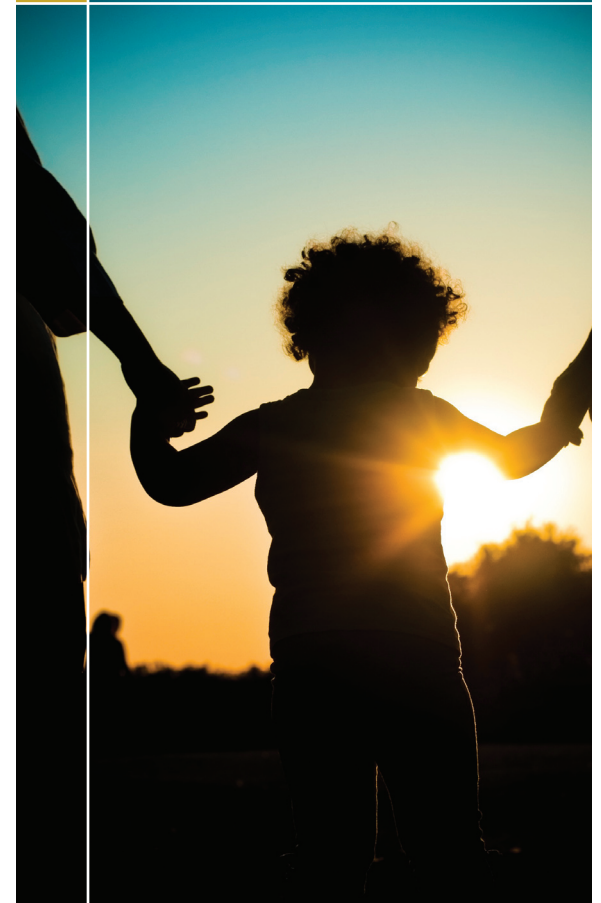


Child Development and Education

Child Development and Education

A Resource Guide for Priority
Population Families

NEW BEDFORD



Resource Guide

Justice Resource Institute

35 Summer Street, Suite 302
Taunton, MA 02780
(508) 745-3720
jri.org

Services:

- On-site observations of children
- Develop individualized intervention plans
- Engage and support families
- Offer resources & referral information

People Acting in Community Endeavors, Inc. (PACE)

166 William Street
New Bedford, MA 02740
(508) 999-9920
paceinfo.org

Services:

- Fuel Assistance
- Health Access
- Head Start
- Child Care Works
- The Family Center
- Emergency Food Bank
- Housing Services
- Tax Preparation



Kennedy Donovan Center

Early Intervention
19 Hawthorn Street
New Bedford, MA 02740
(508) 997-1570
www.kdc.org

Services:

- Early Intervention Services include parent education; physical, speech/language and occupational therapies; service coordination; nutrition; socialization groups; and transition-to-school planning. These services are provided in natural settings such as home, child care centers or community play groups at KDC.

Healthy Families

385 County Street
New Bedford, MA 02740
(774) 206-8810

Services:

- A home-based parent support and coaching program available for first-time parents age 20 and under. Available from pregnancy until your child's third birthday.

Child & Family Services

3057 Acushnet Ave
New Bedford, MA 02740
(508) 990-0894
child-familyservices.org

Services:

- Child Behavioral Health Services
- Adult Behavioral Health Services
- Community Based Acute Treatment
- Community Crisis Stabilization
- Emergency Services (Crisis Center)

Department of Transitional Assistance

160 West Rodney French Boulevard
New Bedford, MA 02744
(508) 961-2000
www.mass.gov/eohhs/gov/departments/dta

Services:

- Food Assistance: SNAP
- Job Assistance
- Cash Assistance

Department of Children and Families

651 Orchard Street, Suite 406
New Bedford, MA 02740
(508) 910-1000
www.mass.gov/eohhs/gov/departments/dcf

Services:

- Child Abuse & Neglect
- Foster Care
- Adoption
- Adolescent Services
- Health & Medical Services

Greater New Bedford Career Center

25 Elm Street
New Bedford, MA 02740
(508) 990-4000
newbedfordcareercenter.org

Services:

- Job Search Assistance
- Resource Center for Job Search
- Job Matching
- Job Fairs
- On-Site Employer Recruitment
- Labor Market Information
- Community Resource Information

