



Welcome!

Child Development and Education

Our top mission while working with priority populations is to provide the most thorough and supportive resources in order to help our families work towards reaching their child's optimal growth and development, by offering them the necessary tools.

By compiling a list of programs, we guide each family through the process of accessing the resources which promote family literacy, social services, case management, etc.

We are able to refer families to local licensed family therapists, mental health professionals and many more services listed on this pamphlet.

Child Development and Education, Inc.

Lawrence Staff Directory

Office Director:

Ybelka Ortiz - yortiz@cdedu.co

Administrator Director:

Yazmin Marrero - ymarrero@cdedu.co

Contract Manager:

Minerva De Jesus Iraola - mdejesus-iraolae@cdedu.co

Yomayra Jaquez - yjaquez@cdedu.co

Child and Family Support Specialist:

Catiria Sanchez - csanchez@cdedu.co

Family Focus Specialist:

Elizabeth Torres - etorres@cdedu.co

Payroll Administrators:

Giselle Oleaga - goleaga@cdedu.co

Ysabel Braicntil - ybraicntil@cdedu.co

Parent Fee Administrator:

Jennis Olivo - jolivo@cdedu.co

CDE Administrator:

Dilenia Cabral - dcabral@cdedu.co

Nataly Ceden - nceden@cdedu.co

Family Child Care Coordinators:

Myrna Zayas - mzayas@cdedu.co

Miozoti Soto - msoto@cdedu.co

Miriam Sanquintin - msanquintin@cdedu.co

Niurka Diaz - ndiaz@cdedu.co

Gabriela Cedano - gcedano@cdedu.co

Ziada Cochran - zcochran@cdedu.co

Soris Villar - svillar@cdedu.co

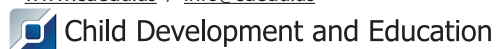
Edith Evangelista - eevangelista@cdedu.co

Child Development and Education, Inc.

12 Methuen Street, Lawrence, MA 01840

(Phone): 978-687-9133 (Fax): 978-687-9533

www.cdedu.us / info@cdedu.us

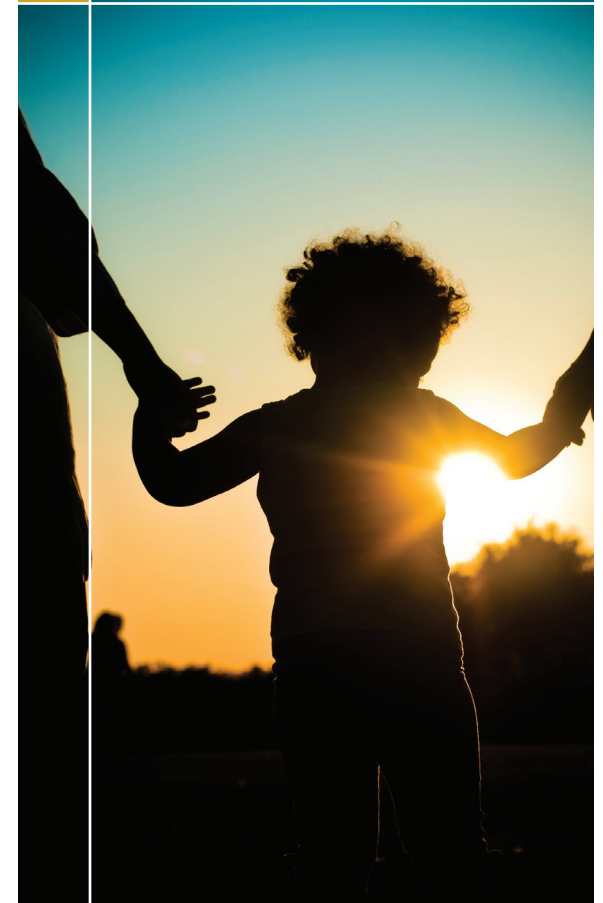


Child Development and Education

Child Development and Education

A Resource Guide for Priority Population Families

LAWRENCE



Resource Guide

Professional Center for Child Development

439 S. Union Street
Lawrence, MA 01843
(978) 688-5070
www.theprofessionalcenter.org

Services:

- Early Intervention
- Pediatric Therapy Program
- 2x2 Toddler Play Groups
- Regional Consultation Program

Massachusetts Society for the Prevention of Cruelty to Children (MSPCC)

15 Union Street, Bldg. E, Suite 115
Lawrence, MA 01840
(978) 682-9222
www.mspcc.org

Services:

- Funded by EEC for children in childcare settings provided by Children's Friend, Open to all in the northeast region.



Autism Care Partners

439 South Union St.
Building 1, Suite 116
Lawrence, MA 01843
800-679-3609
www.autismcarepartners.com

South Bay Community Services

360 Merrimack Street Building 5 Entrance F
Lawrence Ma 01843
(978) 620-0290
www.southbaycommunityservices.com

Services:

- Early Childhood Services
- Early Intervention/Birth to Three Services
- Children's Behavioral Health Initiative Services
- Mental Health and Substance Abuse Counseling Services

Leahy Behavioral Services

12 Methuen Street
Lawrence Ma 01840
(978) 683-3128
www.bilhbehavioral.org

Services:

- Individual, family, group, couples Therapy
- Psychiatric Services
- Crisis Management
- Youth Social Skills Groups
- Adult Wellness Groups

Angel Care Kids Therapy Center Inc

969 Main Street
Haverhill MA 01830
(978)521-6150
www.angelcarekids.com

Services:

- Occupational Therapy
- Speech Therapy
- Evaluations Sensory Integration

