



Welcome!

Child Development and Education

Our top mission while working with priority populations is to provide the most thorough and supportive resources in order to help our families work towards reaching their child's optimal growth and development, by offering them the necessary tools.

By compiling a list of programs, we guide each family through the process of accessing the resources which promote family literacy, social services, case management, etc.

We are able to refer families to local licensed family therapists, mental health professionals and many more services listed on this pamphlet.

Child Development and Education, Inc.

Chelsea Staff Directory

Office Director:

Natalie Morillo-Cano - ncano@cdedu.co

Administrator Director:

April Aguirre - aguirre@cdedu.co

Contract Manager:

Christine Vargas - cvargas@cdedu.co

Parent Fee Administrator:

Maria Rodriguez - mrodriguez@cdedu.co

Maura Noguera - mnoquera@cdedu.co

Payroll Administrator:

Delmi Melara - dmelara@cdedu.co

Family Child Care Coordinators:

Silvia Salazar - ssalazar@cdedu.co

Claudia Villa - cvilla@cdedu.co

Aurora Andrade - aandrade@cdedu.co

Child Development and Education, Inc.

100 Everett Ave, Unit 15, Chelsea, MA 02150

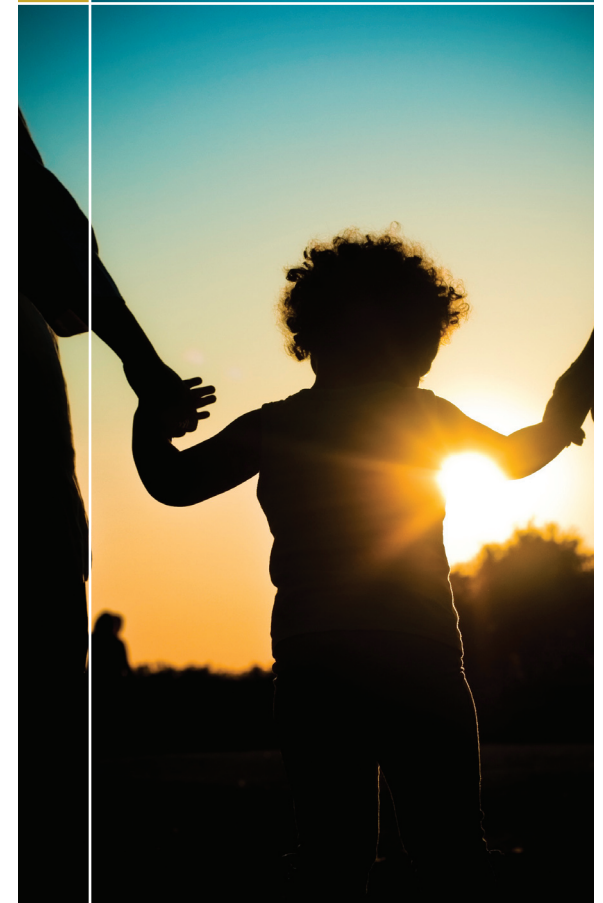
(Phone): **617-889-9371** (Fax): **617-889-9376**

www.cdedu.us / info@cdedu.us

Child Development and Education

A Resource Guide for Priority Population Families

CHELSEA



Resource Guide

North Suffolk Mental Health Association

301 Broadway, Chelsea, MA 02150
617-889-3300
www.northsuffolk.org

Services:

- Child Clinical Services
- In-Home Therapy
- Community Service Agency
- Early Childhood Services
- MassStart
- Children's After School Program

Roca

101 Park Street, Chelsea, MA 02150
617-889-2145
www.rocoinc.org

Services:

- Teen parents services
- Counseling
- Transitional Employment Program
- Job Placement

CAPIC

100 Everett Ave, Unit 14, Chelsea, MA 02150
617-884-6130
www.capic.org

Services:

- Tax preparation Programs
- Fuel Assistance
- Workforce Development
- Chelsea/Revere Family Network
- Chelsea City Summer Camp
- Head Start



Chelsea Housing Authority

54 Locke Street, Chelsea, MA 02150
617-884-5617
www.chelseaha.com

Services:

- Massachusetts Rental Voucher Program
- Centralized Section 8
- Alternative Housing Voucher Program
- Family Self-Sufficiency Program

Harbor Area Healthy Families

105 Everett Avenue, Chelsea, MA 02150
617-887-4219
www.healthyfamiliesma.org

Services:

- Provides home visiting and support for firsttime parents under age 21. Parents are eligible for the program during pregnancy until their child is three years old.

Massachusetts Society for the Prevention of Cruelty to Children (MSPCC)

125 Hartwell Avenue, Lexington, MA 02421
781-861-0809
www.mspcc.org/

Services:

- Adoption Services
- Pregnancy and Parenting Support
- Child and Family Counseling
- Trauma Counseling
- Support for Grandparents raising children

Eliot Services

173 Chelsea Street, Everett, MA 02149
781-388-6200
www.e/iotchs.org

Services:

- Early Intervention
- Residential Programing
- Children's Community Based Services

Housing Families of Malden

919 Eastern Ave, Malden, MA 02148
781-322-9119
www.housingfamilies.org

Services:

- Housing
- Legal Services
- Health and Wellbeing

Catholic Charities Shelter

270 Washington Street, Somerville, MA 02143
617-625-1920
www.ccab.org

Services:

- Teen Center
- Shelter
- Family Support
- Child Care
- Counseling
- Interpreter Services

Department of Children and Families (DCF)

100 Everett Avenue, Suite 300, Chelsea, MA 02150
Hotline Number 800-792-5200
www.mass.gov/dcf

Services:

- Adolescent Services
- Domestic Violence
- Out of Home Placements
- Adoption/Guardianship
- Housing Stabilization

